



FRESHLY GROUND COFFEE. BIG SWELLS. A WHITE PICKET FENCE. **100 THINGS TO CRAVE** STRING OF  
BLACK PEARLS. 3-DAY WEEKENDS. SLEEPING OUTDOORS. 6-PACK ABS. FISHING SEASON. SENSE OF HUMOR. MOUNTAIN  
BIKING. BACK MASSAGE. HOMEMADE ICE CREAM. A SMOOTH DANCE PARTNER. PERFECT TEETH. RICH UNCLE. STARTING  
A WEB SITE. CHILDHOOD FRIENDS. FANTASY BASKETBALL. YOUR WEDDING DAY. ORGANIZED CLOSETS. DONUTS.  
50-YARD-LINE SEASON TICKETS. COOKING CLASSES. SUDOKU. TRUTH. BLUE **2009 HONDA CR-V**  
SKIES. 10% ANNUAL RAISE. POSITIVE ATTITUDE. JAZZ. PERSONAL ASSISTANT. 95-MPH FASTBALL. SCUBA DIVING. SURF  
& TURF. DRIVING CROSS-COUNTRY BY YOURSELF. THE WINNING LOTTO TICKET. OUTDOOR SPA. POWER NAPS. CAPRESE  
SALAD. CORNER OFFICE. SUSHI. TELECOMMUTING. PERSONAL TRAINER. PHOTOGRAPHIC MEMORY. SUNDAY  
CROSSWORD PUZZLE. SECRET ISLAND GETAWAY. RECORDING DEAL AT A MAJOR STUDIO. TRAMPOLINE. DINING OUT.  
TANGO. MINTY BREATH. WAKEBOARDING. LONG, WINDING ROADS. NEW BLUE JEANS. KARAOKE. SLEEPING LATE.  
FIRST-CLASS UPGRADE. POKER. SIXTH SENSE. NIGHT OUT WITH FRIENDS. MACARONI AND CHEESE. SKIING THROUGH  
FRESH POWDER. VOTING. ROYALTIES. POOL TABLE. ROOM SERVICE. TAILGATE PARTIES. PLAYING IN A BAND. GIANT-  
SCREEN HDTV. JAPANESE BONSAI. HOT DATE. EARLY MORNING RUN. ATV-ING. COMPLIMENTARY VALET PARKING.  
HOME FITNESS CENTER. BACKSTAGE PASSES. ART GALLERY OPENING. LEATHER RECLINER. FRESH-BAKED CHOCOLATE-  
CHIP COOKIES. HOLE-IN-ONE. BARBEQUE RIBS. OVERHEAD SMASH. BROADWAY TICKETS. FRESH FLOWERS. PERFECT  
PITCH. DIVISION CHAMPIONSHIPS. ROLLER COASTERS. HOSTING A GAME SHOW. WIDE-OPEN SPACES. ALL THE  
ANSWERS. NOISE-CANCELING HEADPHONES. ICED LATTES. GUARDIAN ANGEL. VOLUNTEERING. FRESH SALSA.  
BLOGGING. PEPPERONI PIZZA. VIDEO GAMES. MASTER'S DEGREE. EXCELLENT CREDIT SCORE. WORLD HARMONY.

**MAKE THAT 101. THE  
2009 HONDA CR-V.**







We all crave something. But unlike typical cravings, the desire for a CR-V only intensifies. Maybe it's the strong sense of design. The legendary i-VTEC<sup>®</sup> engine. The spacious interior. Or the amazing ways a CR-V can adapt to your changing life. But then, who's counting?

CR-V EX-L shown in Alabaster Silver Metallic.



A red Honda CR-V is parked in a designated valet spot in front of a modern building at night. The building has large glass windows and is illuminated from within, showing a bar area. The car is parked on a paved surface with white lines. The scene is lit with warm, yellowish light from the building and streetlights. The car's headlights are on, and its reflection is visible on the pavement. The overall atmosphere is sophisticated and upscale.

**A VALET SPOT RIGHT OUT FRONT.**

Style speaks for itself. So getting preferential treatment shouldn't come as a surprise. After all, when a vehicle is built with this kind of attention to detail, everyone notices.

CR-V EX-L shown in Tango Red Pearl.





# GROUP RETREAT.

RELAX AT A DEEPER LEVEL.

With accommodations for five, tasteful appointments and incredibly comfortable seats, CR-V rejuvenates both body and soul. For those who crave a deeper experience, the CR-V EX-L offers an 8-way power driver's seat with lumbar support, dual-zone automatic climate control, leather trim and heated front seats. Everything you (and your friends) could want on the road to enlightenment.

CR-V EX-L shown with Ivory Leather and available Honda Satellite-Linked Navigation System.<sup>TM1</sup>





CR-V EX-L shown with Black Leather and available Honda Satellite-Linked Navigation System.<sup>1</sup>

**FIND YOUR WAY, THE EASY WAY**

In EX-L models, the available Honda Satellite-Linked Navigation System<sup>1</sup> features a huge database of maps and over 7 million points of interest. Pick your destination, and turn-by-turn directions\* and voice prompts guide you. Voice recognition can control most navigation and audio system functions. And the rearview camera helps you see behind you when in reverse gear.

\*Some roads unverified. See the navigation system owner's manual for more details on coverage.

**IT'S DIGITAL CITY**

All CR-V audio systems play MP3- and Windows Media<sup>®</sup> Audio<sup>2</sup> (WMA)-compatible CDs and come with an auxiliary input jack. But for 170 channels of digital-quality programming, there's only one choice: XM<sup>®</sup> Radio<sup>3</sup> (EX-L).



**SMART SYSTEMS**

The Maintenance Minder™ system monitors how you drive and alerts you when a specific service is required.

**DRIVER-FOCUSED**

The illuminated steering wheel-mounted controls help you keep your attention on the road ahead (EX, EX-L).

**BRING YOUR FAVORITES**

Navigation-equipped EX-L models add an audio-card reader for your MP3 and WMA<sup>2</sup> digital music files.

**AIR TO BREATHE**

The moonroof is designed to let you enjoy the outdoors while minimizing any wind noise (EX, EX-L).







# WIDE-OPEN SPACES.

TAKE YOUR DREAMS WITH YOU.

Finally, a place big enough to hold practically everything. With the kind of versatility that makes sure you get the most out of every square inch. Add a sturdy lightweight tailgate, and loading and unloading become a dream.<sup>1</sup>

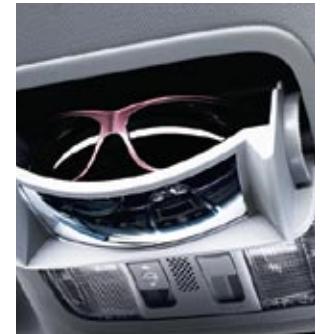
## EASY ACCESS

The tailgate swings up with the slightest nudge of your fingertips. Store cargo in a variety of ways, thanks to the dual-deck cargo shelf (EX, EX-L) that opens your options.<sup>2</sup> It can keep things undercover, and it nestles in the floor, entirely out of the way, when it's not needed.<sup>4</sup>



## IN REACH

The convenient overhead storage is the perfect place for sunglasses.



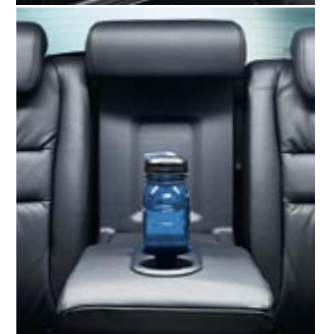
## TALK BACK

A conversation mirror lets you keep an eye on the rear-seat happenings.



## MORE SPACE

Maps, cell phones, mints or even gloves—it'll fit in the dual glove compartments.



## FLIP AND SIP

Rear passengers can flip down and enjoy an armrest with beverage holders.



## POWERED UP

A center console (EX-L) offers beverage holders, an MP3/auxiliary input jack and a 12-volt power outlet. On EX-L models with navigation, the center console also holds a 6-disc CD changer.

Drive responsibly. Some state laws prohibit the operation of handheld electronic devices while operating a vehicle. For safety reasons, always launch your audio application or perform any other operation on your phone or audio device only when the vehicle is safely parked. iPod is a registered trademark of Apple Computer, Inc., registered in the U.S. and other countries. iPod not included. \*Honda reminds you to properly secure items stored in the cargo area.





#### EXERCISE YOUR OPTIONS

From passengers to possessions, the 2009 CR-V has a voluminous interior flexible enough to handle it all. Many seating configurations are possible thanks to the 60/40 split rear seats, which also slide forward and back to make more legroom. With the rear seats folded forward, there's more than 72 cubic feet of cargo space—a great excuse to bring along more toys!







# SIGNATURE MOVES.

CR-V EX-L shown in Tango Red Pearl with accessory fog lights.

## TURN. GRIP. AND REV.

Every Honda is built to perform. So wherever you're headed, CR-V's surefooted agility and innate power will take you far. CR-V's great mileage, however, may be its most memorable move of all.<sup>1</sup>

### i-VTEC, ULEV AND YOU

Just how do our engineers get both power and efficiency out of an engine? It's no secret—it's just science. Like i-VTEC, the latest version of our variable valve timing and lift electronic control. It provides both low-rpm torque as well as plenty of horsepower at higher revs. The smart, efficient powerplant also earns the CR-V Ultra-Low-Emission Vehicle (ULEV) designation.

### 4-WHEELED CONFIDENCE

The available Real Time™ 4WD system is just the thing for drives in the snow or rain—or virtually any condition with a low-traction surface. If the system detects a loss of traction, it can automatically send power to the rear wheels to help keep you underway.

### 5 SPEEDS, NO CLUTCHING

The CR-V's smooth-shifting 5-speed automatic transmission is tuned to provide both brisk acceleration and relaxed highway cruising. It also features Honda's Grade Logic Control to prevent unwanted upshifts and downshifts in hilly terrain.







# GUARDIAN ANGEL.

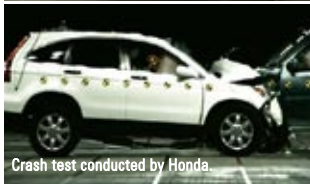
GO CONFIDENTLY, KNOWING THAT SOMEONE IS IN YOUR CORNER.

Honda watches over everyone with a wide range of advanced safety technologies. It is all part of a commitment to provide a high level of occupant and pedestrian protection in every one of our cars and trucks, as well as increased crash compatibility with other vehicles. The CR-V is a prime example of this philosophy, and as a result, has earned a 5-star frontal- and side-impact crash-safety rating from NHTSA\* as well as a Top Safety Pick award from the Insurance Institute for Highway Safety.†

CR-V EX-L shown with Ivory Leather and available Honda Satellite-Linked Navigation System.†

\*Government star ratings are part of the National Highway Traffic Safety Administration's (NHTSA's) New Car Assessment Program ([www.safercar.gov](http://www.safercar.gov)). Model tested with standard side-impact airbags (SABs).

†Front airbags inflate and deflate in a fraction of a second.



Crash test conducted by Honda.

## CRASH COURSES

We learn by testing in some of the world's most sophisticated labs. The knowledge gained is seen in how we engineer our vehicles, with front and rear crush zones that help absorb crash energy before it can reach the strong passenger compartment.

## CHILD-MINDED

The CR-V's standard Lower Anchors and Tethers for Children (LATCH) system makes it easier to install compatible child seats.

## SIX AIRBAGS

A full array of airbags is at the ready to help protect you and your passengers in sufficient impacts. Dual-stage, dual-threshold front airbags, front side airbags and side-curtain airbags are all standard equipment in every CR-V.†

## SAFETY ON DEMAND

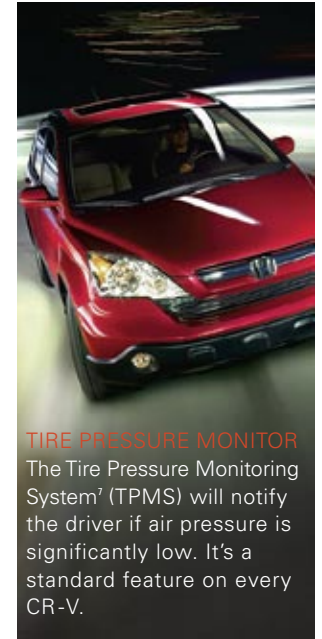
The passenger's front side airbag features an Occupant Position Detection System (OPDS) that's been designed to prevent the airbag from deploying if a child or small-statured person is in the path of deployment.

## ADVANCED BRAKING

The 4-wheel anti-lock brakes also feature Brake Assist, which helps apply full braking in some emergency situations. Electronic Brake Distribution (EBD) helps balance braking forces, depending upon dynamic loading.

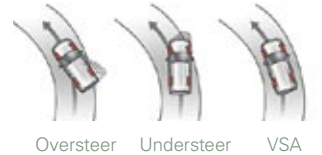
## VEHICLE STABILITY ASSIST™

VSA® helps sense oversteer and understeer, and then can adjust brake pressure at each wheel and reduce engine power to help restore the driver's intended path of travel.



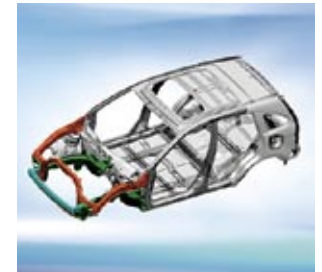
## TIRE PRESSURE MONITOR

The Tire Pressure Monitoring System<sup>7</sup> (TPMS) will notify the driver if air pressure is significantly low. It's a standard feature on every CR-V.



## ACE BODY STRUCTURE

Honda's Advanced Compatibility Engineering™ (ACE™) body structure increases impact compatibility with different-sized vehicles in front-end collisions. It helps to redirect crash energy around the rigid passenger compartment, enhancing protection.



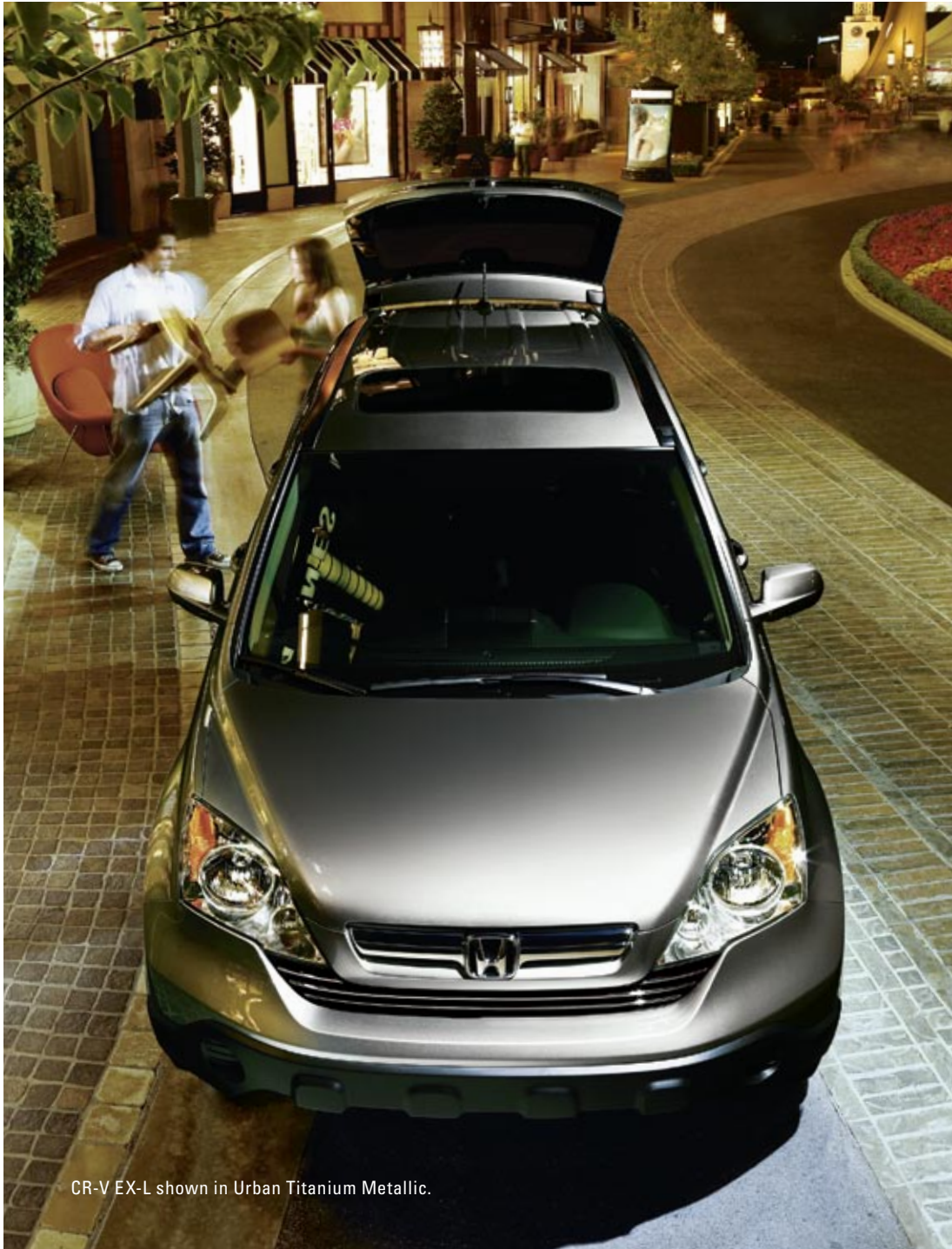
## ACTIVE HEAD RESTRAINTS

Every CR-V comes with active head restraints in the front seats, which can deploy in a sufficient rear impact and help reduce head and neck injury.



†Honda reminds you and your passengers to always buckle up. Children 12 and under are safest when properly restrained in the rear seat.





CR-V EX-L shown in Urban Titanium Metallic.



CR-V 4WD EX shown in Green Tea Metallic with accessory roof rack and ski attachment.

Over 25 years ago, Honda began assembling cars in the United States. Today, almost 4 out of 5 Hondas sold in the U.S. are assembled in North America. Many are developed here, too. And every Honda is a smart value thanks to timeless design, great reliability and extended maintenance intervals. Check out our Best Resale Value Awards<sup>®</sup> from *Kelley Blue Book's* [kbb.com](http://kbb.com), Best Overall Value Awards from IntelliChoice<sup>®</sup> and – for the 5th year in a row – *Automotive Lease Guide's* prestigious Industry Brand Residual Value Award.<sup>10</sup>



CR-V LX shown in Borrego Beige Metallic.





CR-V 4WD EX-L shown in Glacier Blue Metallic.

“WE ONLY HAVE ONE FUTURE, AND IT WILL BE MADE OF OUR DREAMS.”

–Soichiro Honda

A dream is a view of the



world not as it is, but as it could be. For 60 years, Honda has encouraged its associates to aim beyond what is

currently possible. All for the purpose of progressing human mobility. This spirit has resulted in advances in environmental



technology, like the

hydrogen fuel cell FCX Clarity, that brings us closer to a future filled with blue skies. It guides us as we strive to exceed

government safety

regulations and has led to industry-changing innovations on the ground, in the water, and, with the HondaJet™, in the air. And it pushes us to use premier



race circuits as testing grounds



for our ideas. Moving forward, our minds are open to new ideas, no matter where they come from.

Because you never know what will

be until you discover what can be. [dreams.honda.com](http://dreams.honda.com)



Engineering	LX	EX	EX-L
Engine Type	In-Line 4-Cylinder	In-Line 4-Cylinder	In-Line 4-Cylinder
Engine Block/Cylinder Head	Aluminum-Alloy	Aluminum-Alloy	Aluminum-Alloy
Displacement (cc)	2354	2354	2354
Horsepower @ rpm (SAE net)	166 @ 5800	166 @ 5800	166 @ 5800
Torque (lb-ft @ rpm)	161 @ 4200	161 @ 4200	161 @ 4200
Valve Train	16-Valve DOHC i-VTEC®	16-Valve DOHC i-VTEC	16-Valve DOHC i-VTEC
Drive-by-Wire™ Throttle System	•	•	•
Real Time™ 4-Wheel Drive	Available	Available	Available
CARB Emissions Rating	ULEV-2	ULEV-2	ULEV-2
Direct Ignition System with Immobilizer	•	•	•
100K +/- Miles No Scheduled Tune-Ups*	•	•	•
Transmission			
5-Speed Automatic Transmission	•	•	•
Body/Suspension/Chassis			
Unit-Body Construction	•	•	•
MacPherson Strut Front Suspension	•	•	•
Multi-Link Rear Suspension	•	•	•
Stabilizer Bar (mm, front/rear)	20/19	20/19	20/19
Variable Power-Assisted Rack-and-Pinion Steering	•	•	•
Steering Wheel Turns, Lock-to-Lock	2.96	2.96	2.96
Turning Diameter, Curb-to-Curb (ft)	37.8	37.8	37.8
Power-Assisted Ventilated Front Disc/ Solid Rear Disc Brakes (in, front/rear)	11.7/12.0	11.7/12.0	11.7/12.0
Wheels	17" Styled Steel	17" Alloy	17" Alloy
All-Season Tires	225/65 R17 102T	225/65 R17 102T	225/65 R17 102T
Exterior Measurements			
Wheelbase (in)	103.1	103.1	103.1
Length (in)	177.9	177.9	177.9
Height (in)	66.1	66.1	66.1
Width (in)	71.6	71.6	71.6
Track (in)	61.6	61.6	61.6
Ground Clearance (in, unladen)	7.3	7.3	7.3
Curb Weight (lbs, 2WD/4WD)	3389/3501	3415/3532	3430/3549
Towing Capacity <sup>11</sup> (lbs)	1500	1500	1500
Interior Measurements			
Headroom (in, front/rear)	40.9/38.6	38.9/38.5	38.9/38.5
Legroom (in, front/rear)	41.3/38.5	41.3/38.5	41.3/38.5
Shoulder Room (in, front/rear)	56.9/56.0	56.9/56.0	56.9/56.0
Hiproom (in, front/rear)	55.9/54.6	55.9/54.6	55.9/54.6
Cargo Volume <sup>4</sup> (cu ft, rear seat up/down)	35.7/72.9	35.7/72.9	35.7/72.9
Passenger Volume (cu ft)	103.8	100.9	100.9
Seating Capacity	5	5	5
EPA Mileage Estimates <sup>5</sup> /Capacities			
5-Speed Automatic (2WD; City/Highway/Combined)	20/27/23	20/27/23	20/27/23
5-Speed Automatic (4WD; City/Highway/Combined)	20/26/22	20/26/22	20/26/22
Crankcase (qt)	5.3	5.3	5.3
Coolant System (qt)	7.5	7.5	7.5
Fuel (gal)	15.3	15.3	15.3
Required Fuel	Regular Unleaded	Regular Unleaded	Regular Unleaded
Seating			
Leather-Trimmed Seats			•
Heated Front Seats			•
Reclining Front Bucket Seats with Adjustable Head Restraints	•	•	•
Driver's Seat with 8-Way Power Adjustment			•
Driver's Seat with Power Lumbar Support			•
Driver's Seat with Manual Height Adjustment	•	•	•
60/40 Split Sliding Fold and Tumble Forward Rear Seats	•	•	•
40/20/40 Reclining Rear Seatbacks w/Center Pass-Through	•	•	•

\*Does not apply to fluid and filter changes. May vary with driving conditions. See your owner's manual for more details.

Safety	LX	EX	EX-L
3-Point Seat Belts at All Seating Positions	•	•	•
Front 3-Point Seat Belts with Automatic Tensioning System	•	•	•
Adjustable Front Seat Belt Anchors	•	•	•
Driver's and Front Passenger's Seat Belt Reminder	•	•	•
Dual-Stage, Dual-Threshold Front Airbags (SRS)	•	•	•
Front Side Airbags with Passenger-Side Occupant Position Detection System (OPDS)	•	•	•
Side Curtain Airbags with Rollover Sensor	•	•	•
Driver's and Front Passenger's Active Head Restraints	•	•	•
Advanced Compatibility Engineering™ (ACE™) Body Structure	•	•	•
Anti-Lock Braking System (ABS)	•	•	•
Electronic Brake Distribution (EBD)	•	•	•
Vehicle Stability Assist™ (VSA®) with Traction Control	•	•	•
Brake Assist	•	•	•
Tire Pressure Monitoring System <sup>7</sup> (TPMS)	•	•	•
Daytime Running Lights (DRL)	•	•	•
Side-Impact Door Beams	•	•	•
Lower Anchors and Tethers for Children (LATCH)	•	•	•
Child-Proof Rear Door Locks	•	•	•
Exterior Features			
One-Touch Power Moonroof with Tilt Feature		•	•
Remote Entry System	•	•	•
Security System		•	•
Chrome Grille		•	•
Chrome Window Trim	•	•	•
Chrome Rear License Trim		•	•
Multi-Reflector Halogen Headlights	•	•	•
2-Speed/Intermittent Windshield Wipers	•	•	•
Variable Intermittent Windshield Wipers		•	•
Intermittent Rear Window Wiper/Washer	•	•	•
Heat-Rejecting Green-Tinted Glass	•	•	•
Folding Power Side Mirrors	•	•	Body-Colored/Heated
Full-Length Brakelights	•	•	•
Body-Colored Door Handles		•	•
Rear Privacy Glass		•	•
Audio Systems			
160-Watt AM/FM/CD Audio System with 4 Speakers	•		
160-Watt AM/FM/6-Disc In-Dash Audio System with 6 Speakers		•	
270-Watt AM/FM/6-Disc In-Dash Audio System with 7 Speakers, Including Subwoofer			•
270-Watt AM/FM/6-Disc Center-Console Audio System with 7 Speakers, Including Subwoofer			Navigation Models
MP3/Windows Media® Audio <sup>2</sup> (WMA) Playback Capability	•	•	•
MP3/Auxiliary Input Jack	•	•	•
XM® Radio <sup>3</sup>			•
Digital Audio-Card Reader			Navigation Models
CD Text Display Capability		•	•
Speed-Sensitive Volume Control (SVC)	•	•	•
Instrumentation			
White and Blue Backlit Gauges	•	•	•
Digital Odometer and Digital Trip Meters (2)	•	•	•
Maintenance Minder™ System	•	•	•
Exterior Temperature Indicator		•	•
Average Fuel Consumption Indicator	•	•	•
Miles-to-Empty Indicator	•	•	•



Comfort & Convenience	LX	EX	EX-L
Air Conditioning with Air-Filtration System	•	•	
Dual-Zone Automatic Climate Control System			•
Honda Satellite-Linked Navigation System™ <sup>1</sup> with Voice Recognition and Rearview Camera			Available
Power Windows with Auto-Up/Down Driver's Window	•	•	•
Power Door and Tailgate Locks	•	a•	•
Cruise Control	•	•	•
Tilt and Telescopic Steering Column	•	•	•
Leather-Wrapped Steering Wheel			•
Steering Wheel-Mounted Audio Controls		•	•
Retractable Center Tray Table	•	•	
Center Console			•
Driver's and Front Passenger's Vanity Mirrors	•	•	•
Conversation Mirror with Sunglasses Holder	•	•	•
Instrument Panel-Mounted Shifter	•	•	Leather-Wrapped
Beverage Holders, Front and Rear (8 total)	•	•	
12-Volt Power Outlets	Front/Rear	Front/Center Tray/Rear	Front/Center Console/Rear
Upper and Lower Glove Compartments	•	•	•
Under-Seat Storage Bin	•	•	
Door-Pocket Storage Bins	•	•	•
Map Lights	•	•	•
Ambient Console Lighting	•	•	•
Driver-Side Garment Hook	•	•	•
Remote Fuel Filler Door Release	•	•	•
Rear Window Defroster	•	•	•
Rear-Seat Heater Ducts	•	•	•
Floor Mats	•	•	•
Dual-Deck Cargo Shelf		•	•
Cargo Area Tie-Down Anchors (4 total)	•	•	•
Cargo Area Light	•	•	•



Personalize and protect with Honda Genuine Accessories. They're manufactured to the same strict standards as the rest of the vehicle. Please see your dealer for details.



Whether you wish to buy or lease a Honda vehicle, Honda Financial Services can assist you with the process. Please ask your dealer which lease or purchase plan best suits your needs.



Honda Care® is an affordable, comprehensive vehicle and travel protection plan backed by Honda reliability, service and parts. Please see your Honda dealer for details.



#### ACCESSORIES

Choose from a wide variety of Honda Genuine Accessories, including a roof rack, running boards and fog lights.



Your dealer's team of trained technicians is at the ready to help keep your Honda in superb shape. All 2009 Honda vehicles – and any Honda Genuine Accessories installed at the time of purchase – are covered by the 3-year/36,000-mile New-Vehicle Limited Warranty.<sup>12</sup> Plus, Honda cars and trucks are covered by a 5-year/60,000-mile Limited Powertrain Warranty, too.<sup>12</sup> For more information or assistance, see your Honda dealer or please give us a call at 1-800-33-Honda.

<sup>1</sup> The Honda Satellite-Linked Navigation System is available on EX-L models in the United States, except Alaska. See your Honda dealer for details. <sup>2</sup> Windows Media® is a trademark or registered trademark of Microsoft Corporation in the United States and/or other countries. <sup>3</sup> Required XM® Radio monthly subscription sold separately after 90-day trial period. Installation costs and other fees and taxes may apply after initial trial period, including a one-time activation fee. All fees and programming subject to change. Subscriptions subject to Customer Agreement available at xmradio.com. XM service only available in the 48 contiguous United States. The XM name is a registered trademark of XM Satellite Radio Inc. <sup>4</sup> Carrying too much cargo or improperly storing it can affect the handling, stability and operation of this vehicle. Before carrying any cargo, be sure to consult the owner's manual for load limits and loading guidelines. <sup>5</sup> Based on 2009 EPA mileage estimates, reflecting new EPA fuel economy methods beginning with 2008 models. Use for comparison purposes only. Do not compare to models before 2008. Your actual mileage will vary depending on how you drive and maintain your vehicle. <sup>6</sup> Insurance Institute for Highway Safety; 11/21/06. <sup>7</sup> For optimal tire wear and performance, tire pressure should be checked regularly with a gauge. Do not rely solely on the monitor system. See your owner's manual for details. <sup>8</sup> Kelley Blue Book's kbb.com awarded Honda three Best Resale Value Awards for the 2008 Civic, the 2008 Civic Hybrid and the 2008 Odyssey. www.kbb.com/brva08. Vehicle's projected resale value is specific to the 2008 model year. Kelley Blue Book is a registered trademark of Kelley Blue Book Co., Inc. <sup>9</sup> Based on 2008 model-year study. IntelliChoice, Inc. www.intellichoice.com. <sup>10</sup> Automotive Lease Guide, 2008 Industry Brand Residual Value Award. <sup>11</sup> Towing requires the addition of the Honda accessory trailer hitch and hitch ball. Refer to the owner's manual for additional towing information. <sup>12</sup> 3-Year/36,000-Mile Limited Warranty, 5-Year/60,000-Mile Limited Powertrain Warranty. Ordinary maintenance or adjustments, parts subject to normal wear and replacement, and certain items are excluded. See your Honda dealer for the terms and conditions of the limited warranties. **Always use seat belts and appropriate child seats. Children 12 and under are safest when properly restrained in the rear seat.** Specifications, features, illustrations and equipment shown in this brochure are based upon latest available information at the time of printing. Although descriptions are believed to be correct, accuracy cannot be guaranteed. American Honda Motor Co., Inc., reserves the right to make changes at any time, without notice or obligation, in colors, specifications, accessories, materials and models. Some features mentioned herein are not available in all areas. See your Honda dealer for details. Some vehicles may be shown with optional equipment. Available = Optional. NA = Not available. All images contained herein are either owned by American Honda Motor Co., Inc., or used under a valid license. It is a violation of federal law to reproduce these images without express written permission from American Honda Motor Co., Inc., or the individual copyright owner of such images. Honda Financial Services is a DBA of American Honda Finance Corporation. Honda, the H-mark symbol, Honda Care, Honda Satellite-Linked Navigation System, HondaJet, Advanced Compatibility Engineering, ACE, Drive-by-Wire, i-VTEC, Maintenance Minder, Real Time, Vehicle Stability Assist and VSA are trademarks of Honda Motor Co., Ltd. ©2008 American Honda Motor Co., Inc.